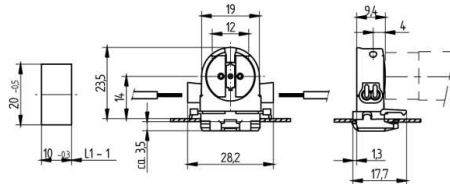
 Create pdf

Lampholders and starter holders

26.660.2001

G 5 Push in lampholders



L1-1: Recommended dimension - the final distance should be governed by the dimensions of the respective lamps and luminaires.

colour	pkg.	wt.	part no.
white	1000	3 g	26.660.2001.50

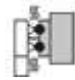

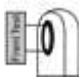




Approval: additional cURus (120W / 600V)

Wiring: side entry wiring

Lamp centre: 14 mm
Snap in foot 10 x 20 mm

Housing: PC
Rotor: PBT

- With snap in foot and closed base IP 40
- A pair of lampholders provides a lamp length tolerance compensation of 2 mm

T 130	Tm 110					 18 AWG 0.5 - 1.0 mm ²	 0.6 - 1.0	
-------	--------	---	---	---	--	--	--	---

Document generated on: We, 8. February 2017 - 14:05